

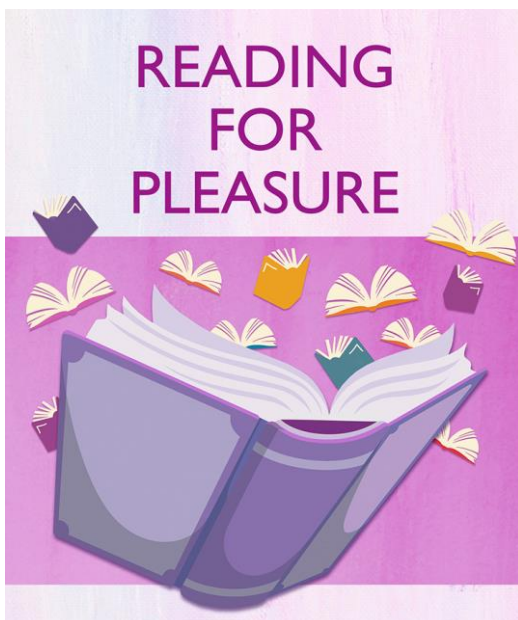
## Message from Mrs Gibson

**Well done to Class K for achieving 100% attendance! This shows a fantastic commitment to their learning and the children have been recognised with a special treat as a reward.**

**We've been delighted with the attitudes of our Year Sixes as they complete the final preparations for their SATs. True role models to us all! Good luck next week Year 6!**

**We're delighted to be offering discos for the children again this year. You will receive a letter about these so please sign up if your child is interested in attending. These are a lovely treat for the children to enjoy and they provide another opportunity for children to socialise with their friends.**

**Our Year 1s have been making huge progress with their phonics learning and I've been thrilled to see how well they're doing with their reading skills and their reading for pleasure. We know that early enjoyment of reading is one of the biggest indicators of academic success, as well as developing a fantastic imagination, so please support your child, whatever their age, to read each day for a few minutes. It really does help!**



# STAR OF THE WEEK

## 6<sup>th</sup> May 2024– 10<sup>th</sup> May 2024

Class:		
A	Brooke – For showing <b>resilience</b> and being brave in her learning.	Freddie – For his <b>aspiration</b> and enthusiasm in his phonics group this week.
B	Ella- For showing great enthusiasm in all her learning.	Liliana – For showing all <b>school values</b> . Following instruction and classroom expectations
C	Marley - Showing <b>resilience</b> and a can-do attitude in Maths. He has also demonstrated amazing racquet skills in PE.	Eli - Showing <b>resilience</b> and <b>aspiration</b> in class and always being ready to learn.
D	Riley – For <b>endeavour</b> you have learnt so many of your phonics sounds now, WOW!	Beryl – For always showing all the <b>school values</b> . You give 100% every day.
E	Harper - for showing <b>empathy</b> and <b>tolerance</b> and looking after your friends.	Amelia - for showing <b>endeavor</b> in your learning. You show good learning behaviours and you are always ready to learn.
F	Oliver – For <b>empathy</b> and <b>tolerance</b> . For your amazing attitude and strength of character when faced with difficult situations. Excellent attitude Ollie!	Lille – For <b>creativity</b> . For your wonderful insight and view of the world. I particularly admire how you explain your understanding of the world around you. Keep up those great ideas!!
G	James – For <b>endeavour</b> – James is always trying his hardest to show his brilliant maths skills.	Poppy – For <b>resilience</b> and <b>endeavour</b> – Poppy has been working so hard this week to focus on her work and help others too.
H	Caitlin - for showing <b>resilience</b> within her learning, particularly within in her writing.	Caelan - for showing great <b>aspiration</b> this week and having a positive attitude to learning.
I	Lexi - Showing <b>aspiration</b> and <b>resilience</b> with her times tables, the hard work is showing in her TTRockstars scores.	Isaac - <b>Aspiration</b> and <b>creativity</b> in his narrative writing.
J	Alex – For showing all the <b>school values</b> and going above and beyond in class.	Abbie – For showing all the <b>school values</b> ! Always ready to learn.
K	James - For your determination and <b>resilience</b> in maths this week! You have worked really hard with understanding how to measure and draw different types of angles	Chloe - for your confidence in sharing ideas in front of your peers. You have been using great SLAM sentences in maths this week
L	Evie – For being a role model to her classmates with her <b>enthusiasm</b> and readiness to learn.	Riley – For <b>endeavouring</b> to always stay focused on his work and do his best even when he finds the learning tricky.
M	Alice W – For always demonstrating all our <b>school values</b> .	Alice F – For <b>resilience</b> in her learning and for being respectful at all times.
N	Ivan – For <b>endeavour</b> – Ivan has had an excellent attitude towards learning and general school life. He has faced some challenges and reacted particularly positively to them. Well done!	McKenzie – For <b>endeavour</b> – McKenzie has tried so hard in maths this week learning about multiplying by 10 and dividing by 10. Well done!

# Weekly Attendance

6<sup>th</sup> May – 10<sup>th</sup> May 2024

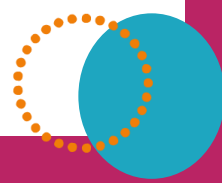
Whole School target: 96%



EYFS	A	87.5%
EYFS	B	93.1%
Y1/Y2	C	90.6%
Y1/Y2	D	92.7%
Y1/Y2	E	81.5%
Y3	F	88.8%
Y3	G	95.4%
Y4	H	85.3%
Y4	I	95.3%
Y5	J	94.9%
Y5	K	100%
Y6	L	92.5%
Y6	M	92.8%
Y3/Y6	N	94.4%
<b>Whole School Attendance</b>		<b>91.77%</b>

At Birley Spa Primary Academy we are committed to helping all pupils to achieve their full potential. Good attendance is a key factor in raising pupils' attainment and supporting their personal development. **In line with DfE and Local Authority policy, we do not authorise holidays taken in school time and we work with families to do everything they can to support their child to attend school every day.** Whilst it is appreciated that children are ill from time to time, please think carefully before allowing your child to be absent from school. The chart below provides an indication of how just a few days absence can significantly impact a child's overall attendance percentage and impede their learning:

Description	Attendance	Whole Days Lost	Lost Hours of Learning
Excellent	100 – 99%	0 – 2	0 – 10
Good	98 – 96%	4 – 7.5	20 – 37.5
Requires Improvement	95 – 91%	9.5 – 17	47.5 – 85
Persistent Absentee	90 – 86%	19 – 27	95 – 135
Critical	85 – 80%	28.5 – 38	142.5 – 190



# Dates for the Diary

<u>Date:</u>	<u>Event:</u>
13 <sup>th</sup> – 16 <sup>th</sup> May	KS2 SATs
17 <sup>th</sup> May	Y3 healthy snacks project (parents are invited into school from 2.50pm)
20 <sup>th</sup> May	Y1 and Y2 spring disco
21 <sup>st</sup> May	Y5 and Y6 spring disco
21 <sup>st</sup> May	Y3 Weston park museum visit
22 <sup>nd</sup> May	Y3 and Y4 spring disco
27 <sup>th</sup> May – 31 <sup>st</sup> May 2024 3 <sup>rd</sup> June	Half term Holiday INSET day – School closed
4 <sup>th</sup> June 2024	School Reopens for children
14 <sup>th</sup> June 2024	Father's Day breakfast 8am, 8:30am and 9am
17 <sup>th</sup> June 2024	Father's Day breakfast 8am, 8:30am and 9am
19 <sup>th</sup> – 21 <sup>st</sup> June 2024	Y6 Kingswood Residential visit
26 <sup>th</sup> June 2024	EYFS sports day – 9am Year 1 and 2 sports day – 1.30pm
28 <sup>th</sup> June 2024	Year 3 and 4 sports day – 9am Year 5 and 6 sports day – 1.30pm
1 <sup>st</sup> – 5 <sup>th</sup> July 2024	Y6 bike ability
17 <sup>th</sup> July 2024	Reports to go home
22 <sup>nd</sup> July 2024	Summer Fayre
23 <sup>rd</sup> July 2024	Last day of the Academic Year
2 <sup>nd</sup> /3 <sup>rd</sup> September 2024	INSET Days – School closed