

Our children really enjoyed World Book Day and spent time reading their favourite books here are some pictures from the fantastic day!

# Mother's Day



We're delighted to give you the opportunity to sit down for an afternoon cream tea with your children to celebrate Mother's Day. We will be hosting this special treat over two days so that everyone has the opportunity to take part. Each child will be entitled to one ticket and can choose who they would like to bring – it can be any special relative.

If you would like to book tickets, our event will take place at:

2:00pm on Friday 17<sup>th</sup> March

3:10pm on Friday 17<sup>th</sup> March

2:00pm on Monday 20<sup>th</sup> March

3:10pm on Monday 20<sup>th</sup> March

Each child and adult will need a ticket, so if you have two children, you'll need 2 tickets for the children and 1 for yourself, etc. If you would like to purchase tickets, they cost £2.50 each, and can be purchased directly from the school office from Wednesday 8th March.

Please notify the office of any dietary requirements.





## Birley Spa Life Experience Opportunities Summer term 2023



Year group	Club	Adult	Day/time	Collect from
Year ½	Storytime	Miss Ibbotson	Tuesday 3:10-3:40	Sheaf (Y1)
Year 1/2	Social skills through board games	Miss Hurst	Thursday 3:10-3:40	Sheaf (Y1)
Year 1/2	First Aid for beginners	Mrs. Clayton	Thursday <b>8:10am</b>	Bring children to Norfolk (Y2)
Year 1/2	Design Club	Mrs. Kay	Thursday 3:10-3:40	Norfolk (Y2)
Year 1/2	Sewing	Miss Grimes	Thursday 3:10-3:40	Endcliffe (Y1/2)
Year ½	Art using story characters	Mrs. Myers	Thursday 3:10-3:40	Sheaf (Y1/2)
Year 1/2	Making Fresh Food	Mrs. Peck	Friday 3:10-3:40	Sheaf (Y1)
Year ½	Dance	Miss Warriss	Friday 3:10-3:40	Endcliffe (Y1/2)

Year group	Club	Adult	Day/time	Collect from
Year 1,2,3	Art expression	Mrs. Hill	Monday 3:10-3:40	Lyceum (Y3)
Year 1,2,3	Enterprise	Mrs. Robinson	Thursday 3:10-3:40	Crucible (Y3)

Year group	Club	Adult	Day/time	Collect from
Year 3-6	Art expression	Mrs. Snelling	Monday 3:10-3:40	Peveril (Y6)
Year 3-6	Reading for pleasure	Mrs. Birkby	Monday 3:10-3:40	Crucible (Y3)
Year 3-6	Mindfulness	Mrs. Keemer	Monday 3:10-3:40	Outdoor classroom on playground
Year 3-6	Making Fresh Food	Mrs. Stott	Tuesday 3:10-3:40	Kelham (Y4)
Year 3-6	Enterprise	Mrs. Anderson	Tuesday 3:10 – 3:40	Millennium (Y5)
Year 3-6	Gardening Club	Mrs. Borrett	Thursday 3:10-3:40	Outdoor classroom on playground
Year 3-6	Makaton (sign language)	Mrs. Horsfield	Thursday 3:10-3:40	Main entrance
Year 3-6	Resilience and confidence	Miss Calvert	Thursday 3:10-3:40	Millennium (Y5)
Year 3-6	Design Club	Mrs. Bradley	Friday 3:10-3:40	Main Entrance
Year 3-6	Spanish	Miss Walker	Friday 3:10-3:40	Graves (Y5)

If your child would like to take up one of these amazing opportunities, at the bargain price of £1.00 per week, you will need to sign up via the letter which will be sent out next week. Please note all clubs will be on a first come, first served basis.

# Weekly Attendance

## 27<sup>th</sup> February - 3<sup>rd</sup> March 2023

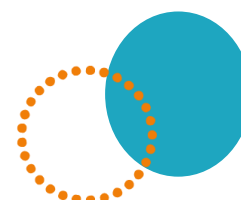


EYFS	Heeley	89.4%
EYFS	Whirlow	93.8%
Y1	Sheaf	93%
Y1/Y2	Endcliffe	94.3%
Y2	Norfolk	92.3%
Y3	Crucible	88.8%
Y3	Lyceum	92.9%
Y4	Kelham	95.4%
Y4	Weston	95.9%
Y5	Millennium	95.8%
Y5	Graves	93.2%
Y6	Bolsover	96.8%
Y6	Peveril	92.5%
Y3/Y6	Shirebrook	92.1%
<b>Whole School Attendance</b>		<b>93.3%</b>

**Well done to Bolsolver class for achieving our school target of 96%**

At Birley Spa Primary Academy we are committed to helping all pupils to achieve their full potential. Good attendance is a key factor in raising pupils' attainment and supporting their personal development. Whilst it is appreciated that children are ill from time to time, please think carefully before allowing your child to be absent from school. The chart below provides an indication of how just a few days absence can significantly impact a child's overall attendance percentage and impede their learning:

Description	Attendance	Whole Days Lost	Lost Hours of Learning
Excellent	100 – 99%	0 – 2	0 – 10
Good	98 – 96%	4 – 7.5	20 – 37.5
Requires Improvement	95 – 91%	9.5 – 17	47.5 – 85
Persistent Absentee	90 – 86%	19 – 27	95 – 135
Critical	85 – 80%	28.5 – 38	142.5 – 190



# STAR OF THE WEEK

## 27<sup>th</sup> February – 3<sup>rd</sup> March

Heeley	Cody – Showing <b>aspiration</b> during group time and independent learning time.	Brody – showing <b>resilience</b> in a morning when leaving mum and for joining in with group time.
Whirlow	Pippa – Her <b>aspiration</b> and <b>endeavour</b> in her independent writing .	Marianna – Her wonderful <b>Ccreativity</b> in making her costume for World book Day.
Sheaf	Marley – Showing <b>empathy</b> and <b>tolerance</b> by offering your support to other children in Sheaf Class.	Phoebe – Being an <b>aspirational</b> learner and independently identifying areas of your work you can improve.
Norfolk	Alina – Being a great team player, and always ready to share her learning with her classmates.	Diamond – Showing <b>aspirational</b> learning values by engaging enthusiastically in all his lessons.
Endcliffe	Boe – Showing <b>aspiration</b> in her phonics and applying skills in her writing during English lessons . Well done Boe !	Maxwell – Showing <b>endeavour</b> in his learning by always being ready on time and being more productive during independent tasks.
Lyceum	Oliver – Your amazing <b>endeavour</b> with your hard work and <b>aspiration</b> with your language and word choice.	Amelia – Showing great <b>resilience</b> and <b>endeavouring</b> to do your best. You have had a super attitude to your learning this week.
Crucible	Jenson and Ebony – showing great <b>creativity</b> in your story writing.	
Weston	George – Showing <b>creativity</b> through his fantasy story setting .	Mila – Showing <b>aspiration</b> through techniques and vocabulary in her writing.
Kelham	Ava – being really organised and <b>creative</b> in planning and organised the whole school bookmark competition.	Isabella – Being really organised and <b>creative</b> in planning and organising the whole school bookmark competition .
Graves	John – Henry – Having such an <b>aspirational</b> attitude to learning, especially in writing and his timetables.	Kai – Showing <b>endeavour</b> in all subjects this week and going above and beyond with his reading at home.
Millennium	Jamie – Showing all our school values in his first few weeks of Birley Spa. You are a great addition to the class.	Dallas – Her <b>aspiration</b> and <b>creativity</b> in English you have written a fantastic leaflet about Brazil.
Bolsover	Liam – your pie chart work in maths. You have shown <b>aspiration</b> by working out tricky percentages independently.	Hollie-Mai – Your great writing in English this week. You have written persuasively and shown <b>empathy</b> .
Peveril	Noah – Showing good <b>creativity</b> and <b>aspiration</b> in his writing.	Loreena – Showing <b>creativity</b> in her writing and having high <b>aspirations</b> for herself.
Shirebrook	Lacey – <b>Endeavour</b> – always trying her best in every lesson and having a great attitude to learning.	

# Dates for the Diary

10 <sup>th</sup> March	Halle Concert – Key Stage 2
17 <sup>th</sup> March	Mother's Day Afternoon Tea (2pm & 3:10pm)
20 <sup>th</sup> March	Mother's Day Afternoon Tea (2pm & 3:10pm)
21 <sup>st</sup> March	Y2 SATS Meeting
23 <sup>rd</sup> March	Easter Fayre
27 <sup>th</sup> March	Meet the Teacher – New Topics
28 <sup>th</sup> & 30 <sup>th</sup> March	Parents' Evening
31 <sup>st</sup> March	Easter Service at Spa View Church
3 <sup>rd</sup> – 14 <sup>th</sup> April	Easter Holidays – <b>School Closed</b>
17 <sup>th</sup> April	Inset Day – <b>School Closed</b>
1 <sup>st</sup> May	Bank Holiday – <b>School Closed</b>
8 <sup>th</sup> May	Bank Holiday – <b>School Closed</b>
9 <sup>th</sup> May – 12 <sup>th</sup> May	SATS Week – Y6
15 <sup>th</sup> – 19 <sup>th</sup> May	SATS Week – Y2
29 <sup>th</sup> May – 2 <sup>nd</sup> June	Half Term – <b>School Closed</b>
5 <sup>th</sup> June	Inset Day – <b>School Closed</b>
9 <sup>th</sup> June	Y6 Crucial Crew Visit
12 <sup>th</sup> – 18 <sup>th</sup> June	Phonics Assessment Week
16 <sup>th</sup> June	Father's Day Celebrations
19 <sup>th</sup> June	Father's Day Celebrations
3 <sup>rd</sup> July	Enterprise Week
11 <sup>th</sup> July	Sports Day – Y1 & Y2 / Y3 & Y4
12 <sup>th</sup> July	Sports Day – EYFS
13 <sup>th</sup> July	Sports Day - Y5 & Y6
14 <sup>th</sup> July	Reports Sent Home
17 <sup>th</sup> July	Summer Fayre
21 <sup>st</sup> July	Whole School Family Picnic

