

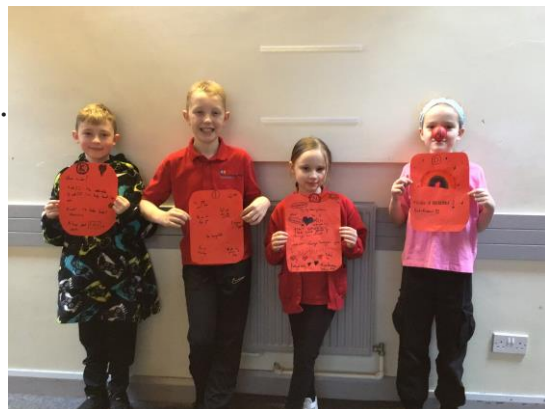
### Message from Mrs Gibson

The children have had a fantastic time getting ready for Enterprise Week. We have smoothies, cakes, windchimes and many more items for you to buy from our entrepreneurs!

We're seeing a range of children presenting their speeches to the whole school to see if they have achieved Bronze Learner status and we're excited to announce that we have some children who are close to becoming Silver learners too!

Our Kindness Keepers have recruited other Key Stage 2 children to support their mission to make sure that every child has someone to play with and have created a timetable and ordered some high vis jackets so that everyone knows who to go to for support.

It's so wonderful to see all of our school values in action everyday at Birley Spa!



### Thank you!

At the end of the term, we will say goodbye to Mrs. Clayton as she moves on to a new school after Easter and to Miss Bolton who is returning to her family in London. We're very grateful to both of them for their time at Birley Spa and wish them both luck in the future.

### Miss King's Marathon

Miss King shared her exciting news with the children in assembly this week – she is going to Paris in the Easter holidays to complete the Paris Marathon which is 42km long! Miss King runs in her spare time and has been training for a long time for this. She has decided to get sponsorship and all money raised will be donated to sports and playground equipment for the Birley Spa pupils! The children were in awe when Miss King talked about the training she puts in and how she uses our values to get better and better at her running.

If you can make a small donation, please either send it to the Office or please go to her GoFundMe page:

<https://gofund.me/d66ede9d>



# STAR OF THE WEEK

## 18<sup>th</sup> March – 22<sup>nd</sup> March 2024

Class :		
A	Remi – For her <b>resilience</b> in settling into nursery and becoming independent in her learning.	Holly – for her <b>aspiration</b> in learning new letter and sounds.
B	Rylee – For showing great <b>creativity</b> and preserving with his learning making a great model in provision.	Evie – For showing great <b>resilience</b> in her learning after returning back to school.
D	Layton – For starting a new school with such a positive attitude.	Evie – For trying hard in writing and producing a formal letter.
E	Jaxon – For showing all <b>the school values</b> and being a super role model for the rest of the class.	Layton – For showing <b>endeavour</b> with his phonics and moving up to the next group.
F	Poppy – For <b>resilience</b> . Poppy has been putting a lot of effort into her phonics and has made a very big improvement.	Lila – For demonstrating <b>ALL of our values</b> . She gives thoughtful and creative answers. She works hard and helps others.
G	Max – For <b>Endeavour and teamwork</b> , Max is always trying his best and always has a smile on his face while doing.	Evie – For outstanding <b>resilience</b> throughout assessment week, she truly never gave up no matter what.
H	Isla - <b>Empathy</b> & kindness - Isla is always considering how others feel and goes out of her way to show acts of kindness.	Lukas - <b>Aspiration</b> - Lukas is consistently putting his hand up to have a go and is eager to participate in class discussions.
I	Joshua – For showing <b>resilience</b> and <b>endeavor</b> throughout assessments.	Marnie - For showing <b>resilience</b> and <b>endeavor</b> throughout assessments.
J	Carter – For showing <b>empathy</b> and <b>tolerance</b> and reflecting on how to make others feel fantastic! This was also shown in his inspiring PSHE work.	Luca – For aiming high and focusing on being his ‘best self’. You have shown <b>all the values</b> . You should be very proud.
L	Mason – For impressing us with both his exceptional manners, and willingness to push himself in all learning.	Jamelia – For working hard to develop her understanding of percentages in maths.
M	Khloe - For being an amazing role model, displaying <b>all our school values</b> , all the time!	Kaci – For a huge improvement in attitude and engagement, particularly in maths. Well done!
N	Junior - This is for <b>all the school values</b> , as he is showing maturity in his approach to school and learning and has consistently been working very hard. His phonics has particularly improved - well done!	

# Weekly Attendance

18<sup>th</sup> – 22<sup>nd</sup> March 2024

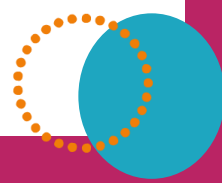
Whole School target: 96%



EYFS	A	93.6%
EYFS	B	92.6%
Y1/Y2	C	96.4%
Y1/Y2	D	96.8%
Y1/Y2	E	94.8%
Y3	F	92.5%
Y3	G	98.4%
Y4	H	94.3%
Y4	I	93%
Y5	J	86.3%
Y5	K	91.2%
Y6	L	91.1%
Y6	M	91.2%
Y3/Y6	N	98.9%
<b>Whole School Attendance</b>		<b>93.3%</b>

At Birley Spa Primary Academy we are committed to helping all pupils to achieve their full potential. Good attendance is a key factor in raising pupils' attainment and supporting their personal development. **In line with DfE and Local Authority policy, we do not authorise holidays taken in school time and we work with families to do everything they can to support their child to attend school every day.** Whilst it is appreciated that children are ill from time to time, please think carefully before allowing your child to be absent from school. The chart below provides an indication of how just a few days absence can significantly impact a child's overall attendance percentage and impede their learning:

Description	Attendance	Whole Days Lost	Lost Hours of Learning
Excellent	100 – 99%	0 – 2	0 – 10
Good	98 – 96%	4 – 7.5	20 – 37.5
Requires Improvement	95 – 91%	9.5 – 17	47.5 – 85
Persistent Absentee	90 – 86%	19 – 27	95 – 135
Critical	85 – 80%	28.5 – 38	142.5 – 190



# Dates for the Diary

<u>Date:</u>	<u>Event:</u>
29 <sup>th</sup> March – 12 <sup>th</sup> April 2024	Easter Holidays
15 <sup>th</sup> April 2024	School Reopens to children
6 <sup>th</sup> May 2024	<b>Bank Holiday – School Closed</b>
27 <sup>th</sup> May – 31 <sup>st</sup> May 2024 3 <sup>rd</sup> June	Half term Holiday INSET day – School closed
4 <sup>th</sup> June 2024	School Reopens for children
14 <sup>th</sup> June 2024	Father's Day breakfast 8am, 8:30am and 9am
17 <sup>th</sup> June 2024	Father's Day breakfast 8am, 8:30am and 9am
23 <sup>rd</sup> July 2024	Last day of the Academic Year
2 <sup>nd</sup> /3 <sup>rd</sup> September 2024	INSET Days – School closed