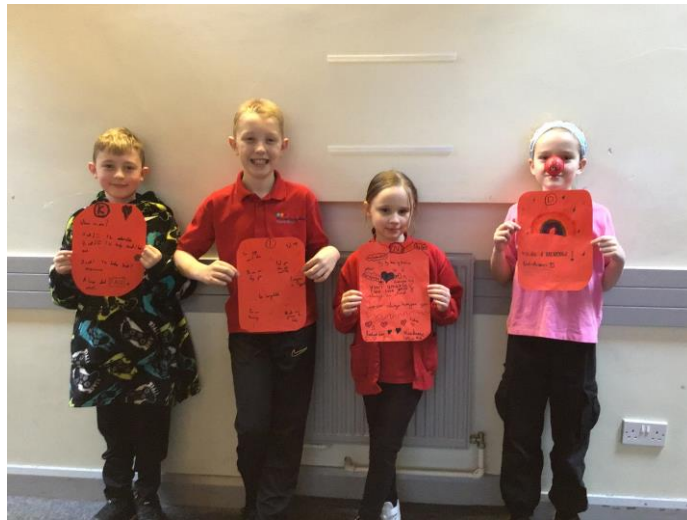


Message from Mrs Gibson

I was delighted to hear the idea from our newly-formed “Kindness Keepers” who have formed a group at breaktimes to support children who would like someone to play with or talk to. The children presented their idea in assembly and asked for other children to join their team or if they’d use this offer – there was a really high number of children who would love to work on this! Well done for showing all of our values!



Parking

This is a polite reminder that our car park is to be used by staff, educational visitors and the emergency services only. The car park is not to be used at the start or end of the school day to drop off or collect children. We are raising this matter due to receiving several concerns raised by parents, carers, children and staff about unauthorised vehicles entering the car park at these times and driving dangerously or blocking other users in.

Some parents are walking through the car park gates with pushchairs and children which causes a real risk to safety and the increased volume of cars can also increase the likelihood of damaging vehicles that are already parked in our staff car park.

The expectation that parents and carers do not use the car park has always been in place so please do not attempt to enter it by car or on foot as access will not be permitted.

Trying to enter by following another car, or by walking through the gates as they are opening or trying to close will trigger the gates’ emergency shut down system which then leaves the gates jammed open and can cause a site safety concern. We are sure you will appreciate that this could cause a safeguarding risk to our whole school community. Please support us in keeping our whole school community safe and our staff car park free from obstruction.

In KS1 we have been learning about where our food comes from in our geography lessons. We were very excited to have a visit from Jenny and her animal friends from Whirlow Hall Farm.



In our lessons, we created some questions to ask Jenny to find out more about farming and food production in the UK. We have recorded our new learning and we would like to share our findings.

We found out that Chicken eats oyster shell to help them produce the shell on the eggs they lay, and that the farm has cats and dogs but not as pets. The dogs help to herd the sheep and the cats chase away the mice and rats that want to eat the animal food. We now know that a life cycle of an animal has the same stages as human but their cycle happens over a shorter time.

Here are some examples of more facts that the children (and adults) learned during our visit.

Is the weather in the UK, good for growing crops? It is good because there is sunshine and rain but not too much. There is a good balance for growing crops.

Yesterday a visitor came to school. I heard that guinea pigs eat their own poop and they have eyes at the sides of their head because they are

When asked if being a farmer was hard, Jenny told us:

It is not an easy job but it a gun job you need to know about animals. And get some work experience on a farm

Do you have a farm shop to sell your food?
Yes. There is a shop where we meat and eggs.

We had a great time and learned lots!

World Book Day

We loved it when the teachers swapped classes last week to share their favourite stories.



STAR OF THE WEEK

11th March – 15th March 2024

Class:		
A	Freddie – for endeavour – for really great listening and leaning this week.	Millie – for endeavour – for positive attitude to learning this week.
B	Coby – for showing great resilience in phonics and using his knowledge independently in his provision.	Issac – for showing great aspiration in his independent learning in provision.
C	Layla – for having high aspirations and taking pride in all areas of her learning.	Flourish – for being creative in her responses in our geography learning. Flourish was able to give a range of reasons to explain where she would purchase fruit from.
D	Freddy – for showing endeavour and aspiration and trying hard to work independently.	Rosie – for showing endeavour and enthusiasm in lessons.
E	Hattie – for being a fantastic role model. You display all the schools values and have a great attitude towards your learning.	Kyla –for being a fantastic role model. You display all the schools values and have a great attitude towards your learning.
F	Tiffany-Jayne – for resilience . Tiffany has been working hard in mathematics to learn fractions and in phonics.	Lillie – For all school values. She is a great role model in the class, always willing to share ideas and help others.
G	Alice – for showing all the school values and always being positive, hard working role model in class.	Charlotte – for resilience in herself and trying really hard if she is finding something– Charlotte has come on leaps and bounds in believing g hard and not giving up.
H	Sienna – for aspiration & resilience – Sienna has worked hard to get her average TT rocks score to 23 and is heading for 25/25.	Elijah – for aspiration – Elijah is always setting high expectations and works very hard to reach them.
I	Elizabeth - showing creativity and aspiration when writing a fantasy story independently	Amelia - Showing all the school values across all her learning
J	Charlie – for showing all school values and really empathising with others.	Lyla-Rose – for inspiring to be so kind and to make a positive difference.
K	Jacob – for showing all the values in all arears of his learning. It is nice to recognise children who always make the right choices.	Yousuf – for resilience – I have been so impressed with Yousuf’s resilience. Yousuf has been fasting this week for his faith and has shared this with us. He has given 100% in every lesson.
L	Ella – for aspiring to do her best learning in all lessons and being a role model to those around her.	Daniel – for showing creativity in Geography when learning about sustainability in use of minerals.
M	Darcie-Rose – for creativity in English, writing an amazing setting description of a cold environment.	Kayla – for showing endeavour and aspiration in all her learning. Kayla has been so engaged this week. Keep it up!
N	Elijah – for resilience – Elijah has had a great week making brilliant choices and has always faced everything with a smile. Well done!	

Weekly Attendance

11th – 15th March 2024

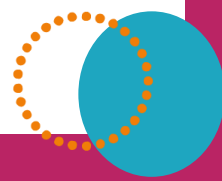
Whole School target: 96%



EYFS	A	90.4
EYFS	B	93.0
Y1/Y2	C	92.5
Y1/Y2	D	92.3
Y1/Y2	E	90.5
Y3	F	93.5
Y3	G	95.7
Y4	H	90.4
Y4	I	93.0
Y5	J	90.1
Y5	K	95.7
Y6	L	92.8
Y6	M	88.8
Y3/Y6	N	91.3
Whole School Attendance		

At Birley Spa Primary Academy we are committed to helping all pupils to achieve their full potential. Good attendance is a key factor in raising pupils' attainment and supporting their personal development. **In line with DfE and Local Authority policy, we do not authorise holidays taken in school time and we work with families to do everything they can to support their child to attend school every day.** Whilst it is appreciated that children are ill from time to time, please think carefully before allowing your child to be absent from school. The chart below provides an indication of how just a few days absence can significantly impact a child's overall attendance percentage and impede their learning:

Description	Attendance	Whole Days Lost	Lost Hours of Learning
Excellent	100 – 99%	0 – 2	0 – 10
Good	98 – 96%	4 – 7.5	20 – 37.5
Requires Improvement	95 – 91%	9.5 – 17	47.5 – 85
Persistent Absentee	90 – 86%	19 – 27	95 – 135
Critical	85 – 80%	28.5 – 38	142.5 – 190



Dates for the Diary

<u>Date:</u>	<u>Event:</u>
20 th March 2024	Group photos
29 th March – 12 th April 2024	Easter Holidays
15 th April 2024	School Reopens to children
6 th May 2024	Bank Holiday – School Closed
27 th May – 31 st May 2024 3 rd June	Half term Holiday INSET day – School closed
4 th June 2024	School Reopens for children
14 th June 2024	Father's Day breakfast 8am, 8:30am and 9am
17 th June 2024	Father's Day breakfast 8am, 8:30am and 9am
23 rd July 2024	Last day of the Academic Year
2 nd /3 rd September 2024	INSET Days – School closed